



Since 1962

INDIA'S MOST RELIABLE
DESIGNER TILES
& STONE COMPANY

www.thestonepeople.in

Colour Chart Ceramique



WIESMOSBYRD



GOLDER IRIS ES 09 (A)



MIDNIGHT ES 11 (A)



SPIDER LILY ES 101 (C)



ASTER ES 51 (B)



MARIGOLD ES 04 (A)



SNOW DRAGON ES 15 (A)



STATICA ES 12 (B)



SUNFLOWER ES 102 (C)



TULIP ES 52 (A)



DAFFODILS ES 06 (Group A)



PURPLE WINGS ES 08 (B)



POMELO ES 13 (A)



YELLOW SILK ES 103 (C)



SWEET PEA ES 53 (A)



CLITORIA ES 05 (A)



DIAMOND FLOWER ES 07 (A)



FAIRY TALE ES 14 (A)



COBRA SAFFRON ES 104 (C)



TANSY ES 55 (A)



Colour variation & size variation is in herit properties of Handmade Tiles.



PIGEON BERRY ES 41 (A)



EMERALD GREEN ES 61 (C)



QUEEN CRAPE ES 21 (B)



ORCHIDS ES 31 (B)



STIN FLOWER ES 56 (A)



BUTTERFLY PEA ES 42 (B)



OLIVE GREEN ES 62 (B)



GRAPE-VINE ES 22 (A)



SUPERB LILY ES 32 (A)



VIOLET ES 71 (B)



WATER LILY ES 45 (A)



SEA GREEN ES 24 (A)



JENNIFER ES 23 (A)



SCARLET MALLOW ES 33 (A)



CATMINT ES 72 (A)



CACTUS ES 46 (A)



SEA ICE ES 25 (A)



BLUE BOTTLE ES 43 (B)

Colour variation & size variation is in herit properties of Handmade Tiles.

CRAKLE



EV 201



EV 211



EV 220



EV 230



EV 241



EV 202



EV 212



EV 222



EV 231



EV 242



EV 203



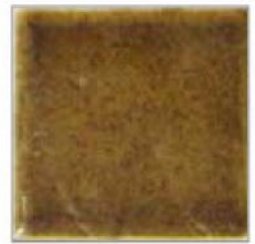
EV 213



EV 223



EV 232



EV 243



EV 204



EV 221



EV 224



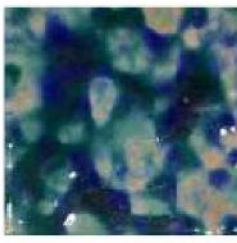
EV 233



EV 251

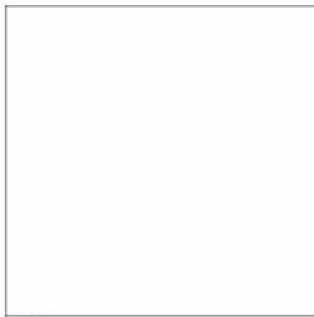


EV 252



NEW

SILK (48mmx48mm)



EV 111



EV 112



EV 113



EV 114



EV 115



EV 116

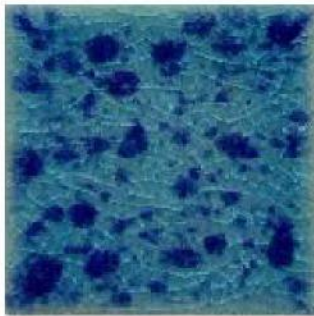


EV 117



EV 120

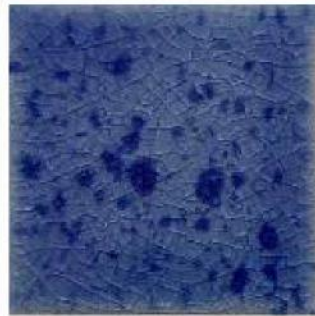
RAINDROP (48mmx48mm)



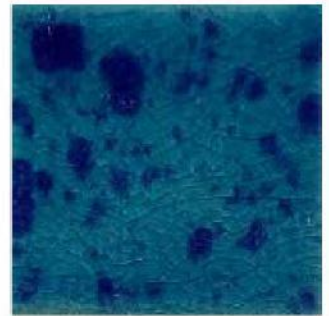
EV 301



EV 302

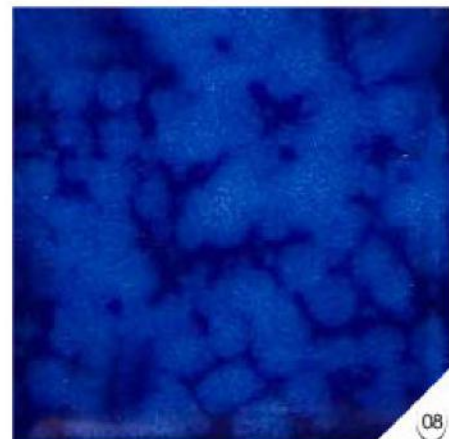
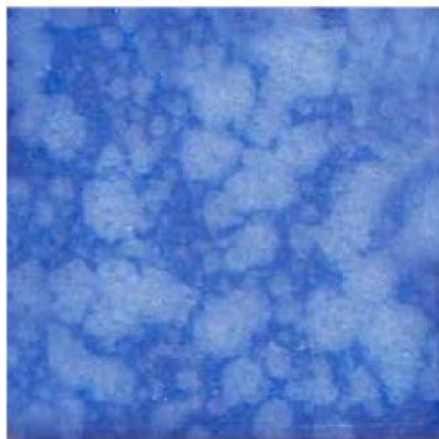
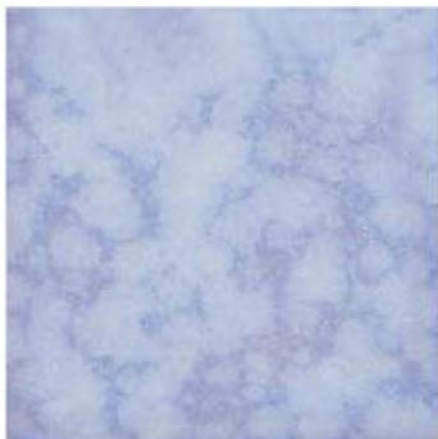


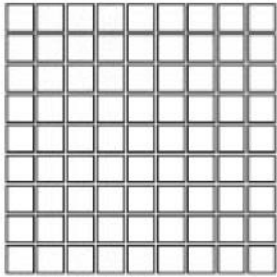
EV 303



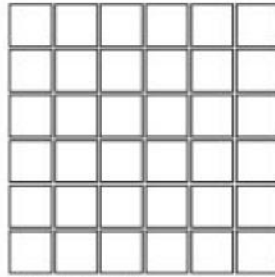
EV 304

FLAME (73mmx73mm)

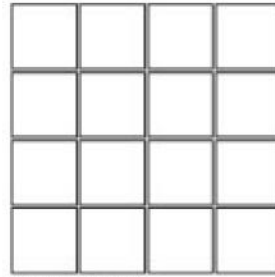




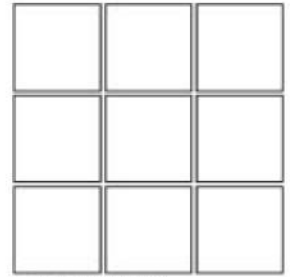
TILE SIZE : 32MM X32MM



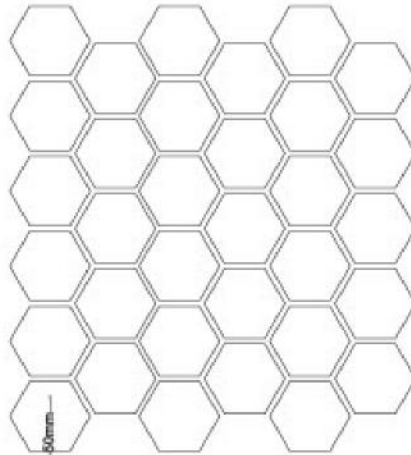
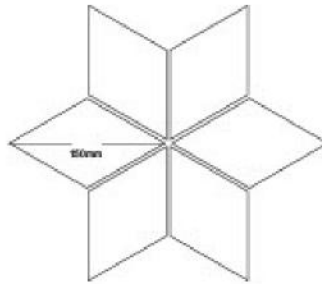
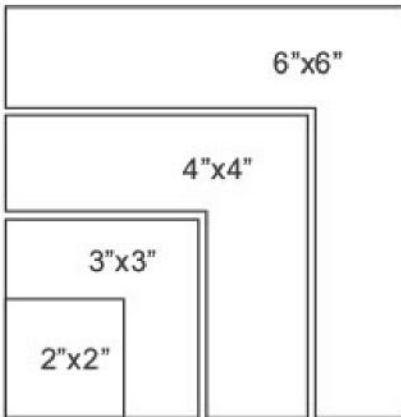
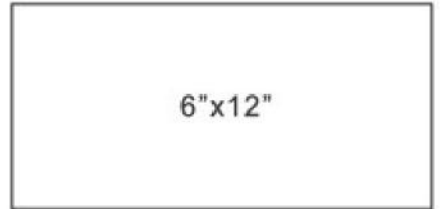
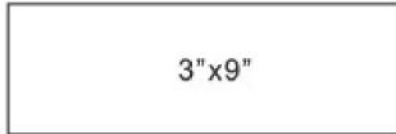
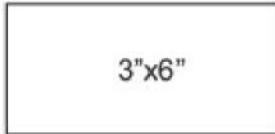
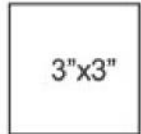
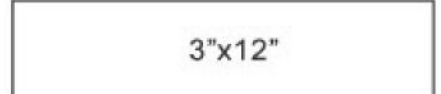
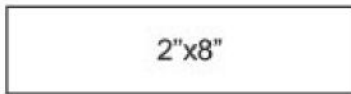
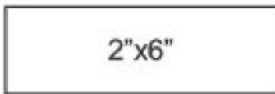
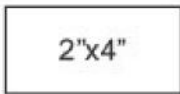
TILE SIZE : 60MM X60MM



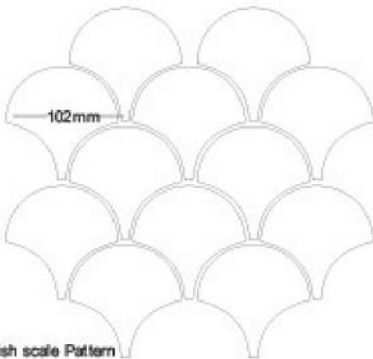
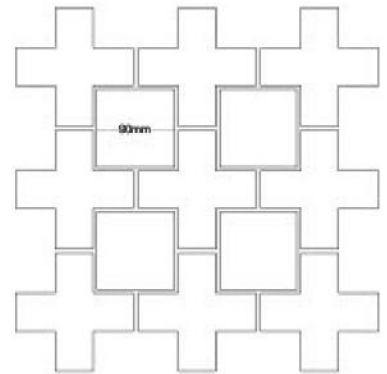
TILE SIZE : 75MM X75MM



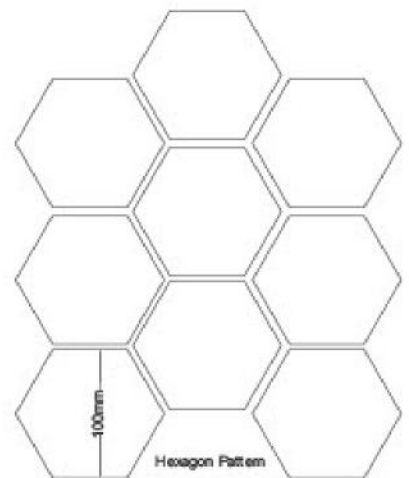
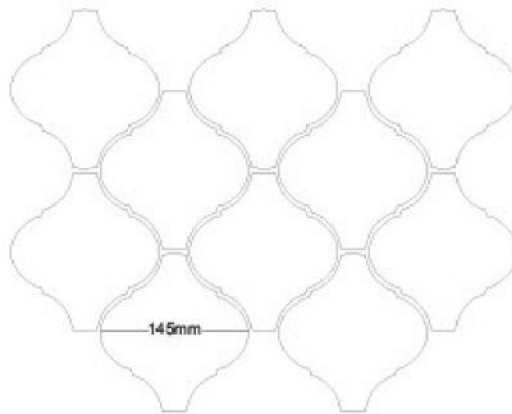
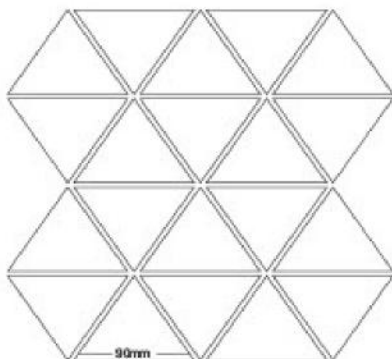
TILE SIZE : 100MM X100MM



Hexagon Pattern

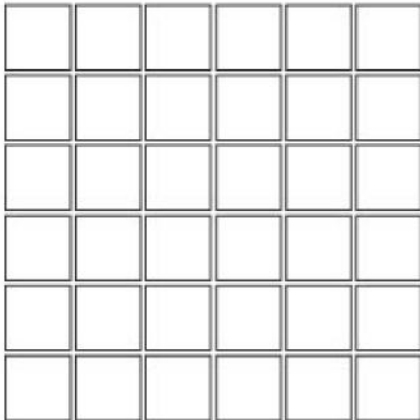


Fish scale Pattern

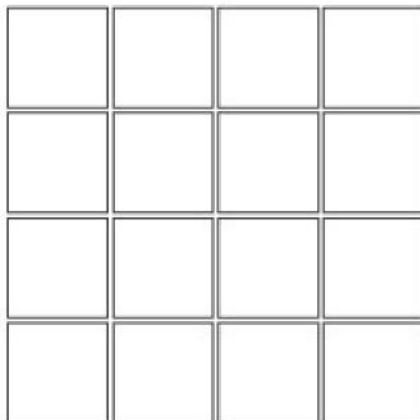


Hexagon Pattern

Shapes & Sizes
Porcelaine



TILE SIZE : 48MM X48MM (36 pcs per sheet)
SHEET SIZE : 282 X 282 MM (APPROX)
GAP : 3 MM (APPROX)
PACKING : MESH MOUNTED
STANDARD BOX PACKING



TILE SIZE : 73MM X73MM (16 pcs per sheet)
SHEET SIZE : 300 X 300 MM (APPROX)
GAP : 5 MM (APPROX)
PACKING : MESH MOUNTED
STANDARD BOX PACKING

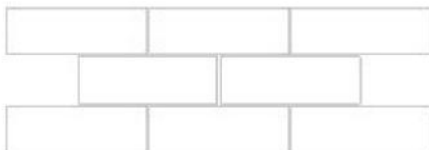
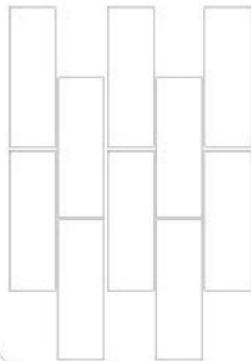


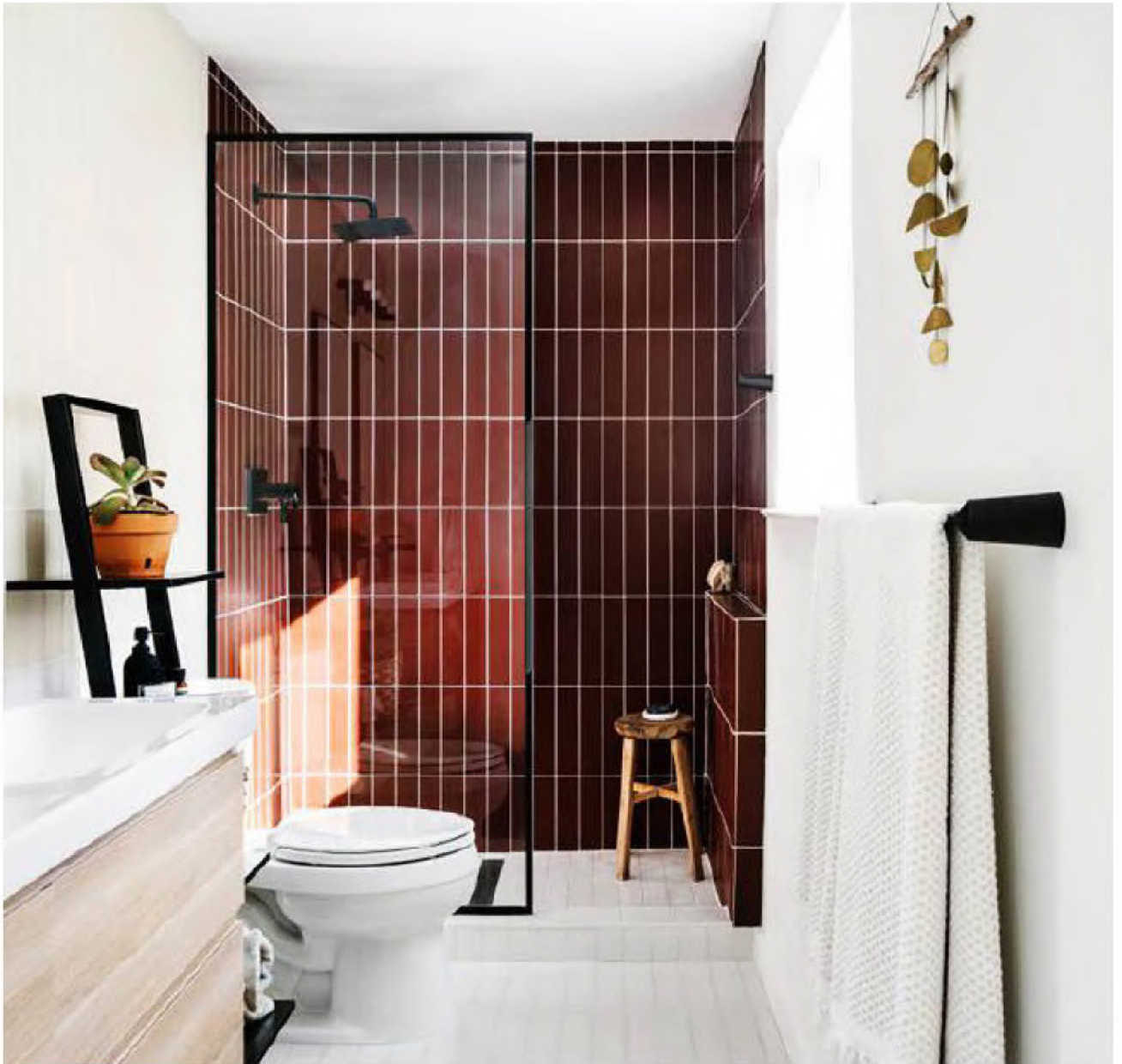


ES 02A

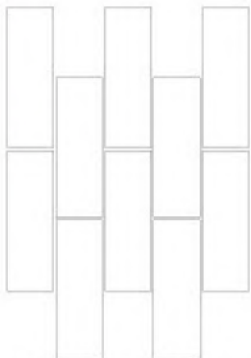
ES 15

ES 08A





ES08A



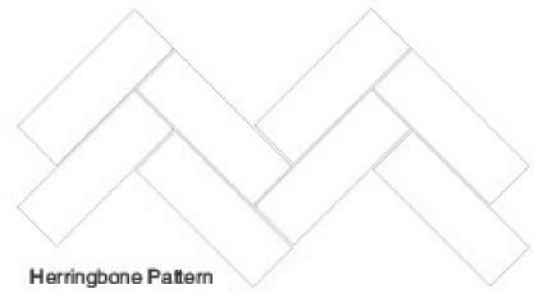
Brick Pattern (vertical)



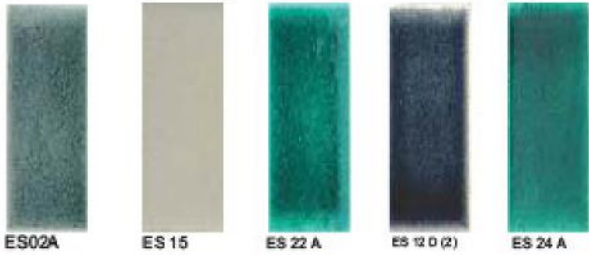
Herringbone Pattern



Brick Pattern (Horizontal)



Herringbone Pattern



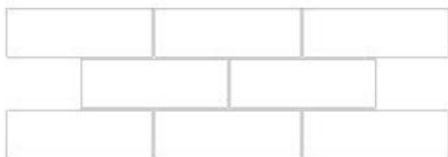
ES02A

ES 15

ES 22 A

ES 12 0 (2)

ES 24 A



Brick Pattern (Horizontal)



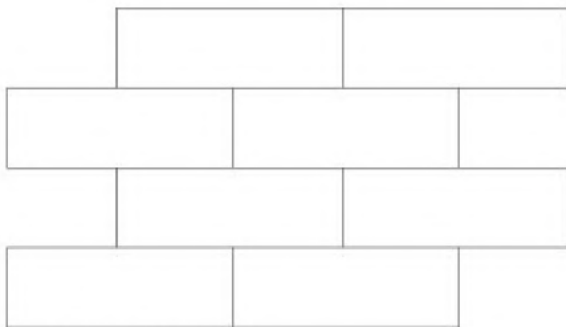
ES02A



ES 15

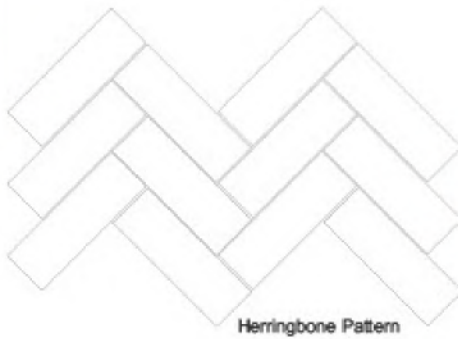
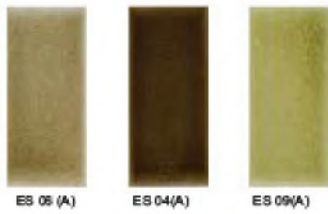


ES 14 A

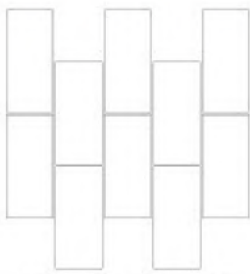


Brick Pattern (Horizontal)

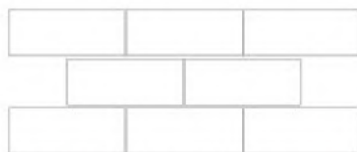
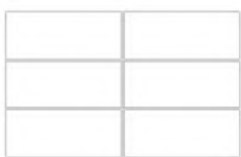




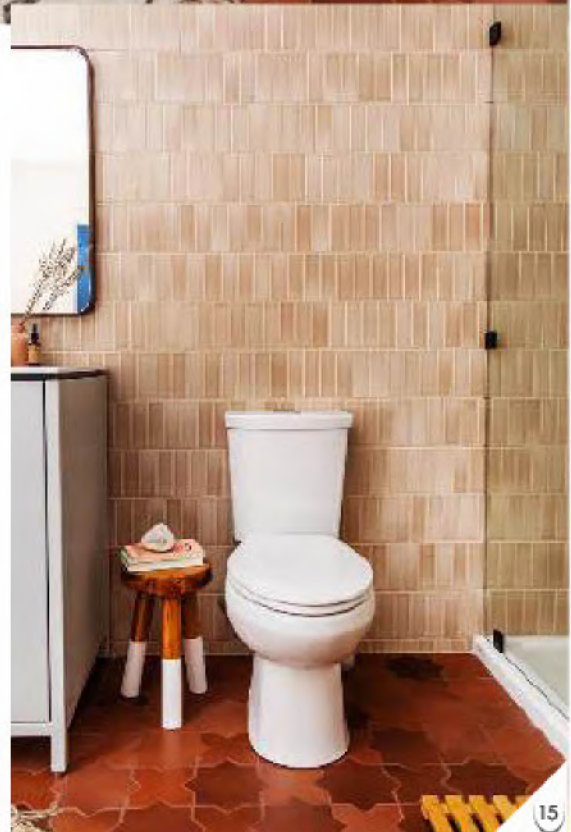
Herringbone Pattern

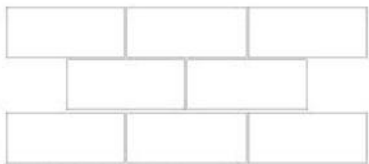
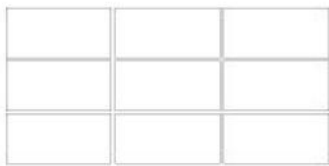
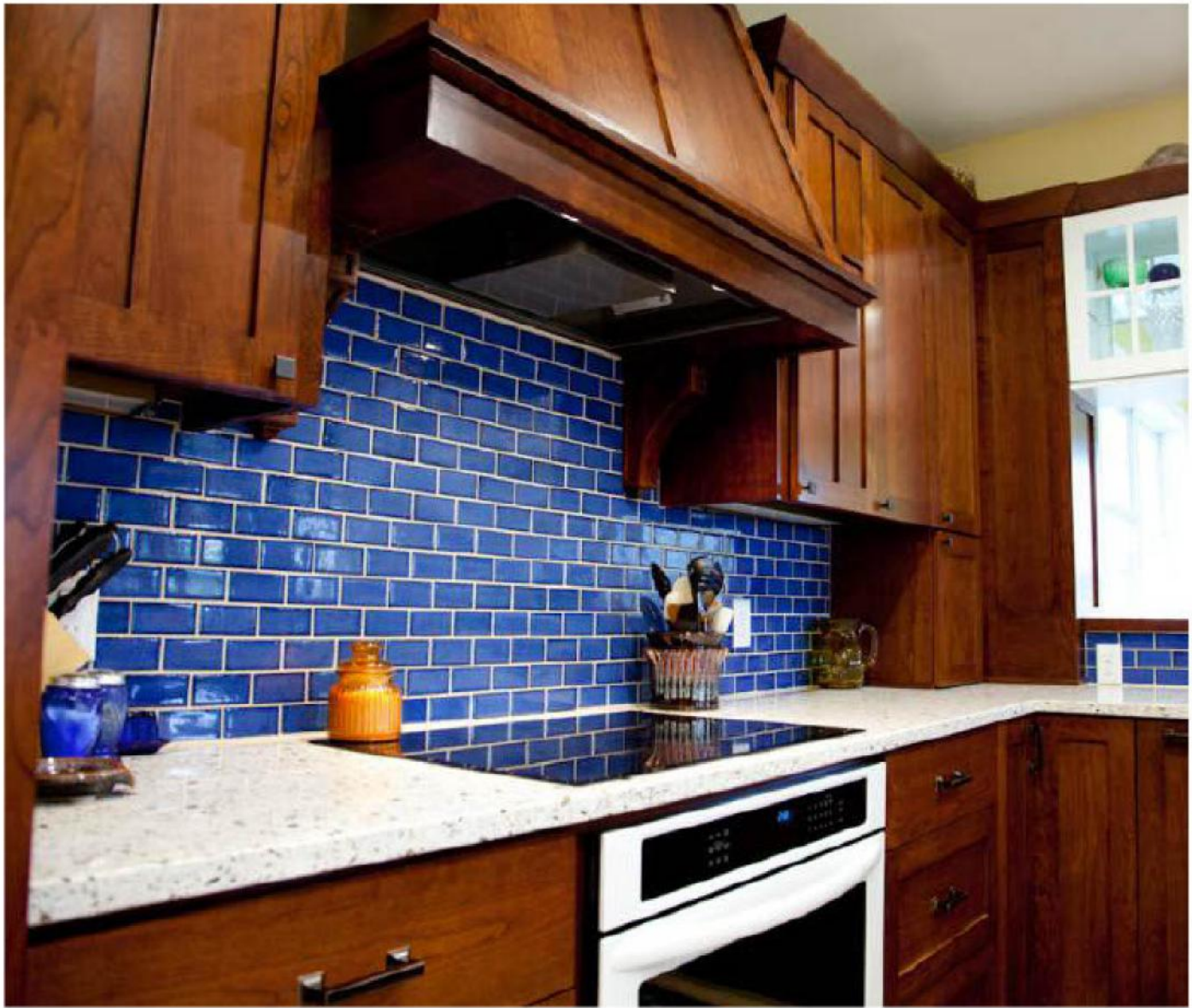


Brick Pattern (verticale)

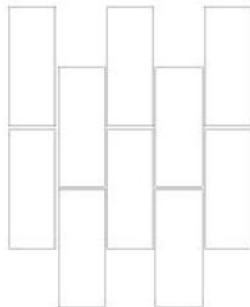


Brick Pattern (Horizontal)





Brick Pattern (Horizontal)



Brick Pattern (verticale)



ES 09(A)





Brick Pattern (Horizontal)





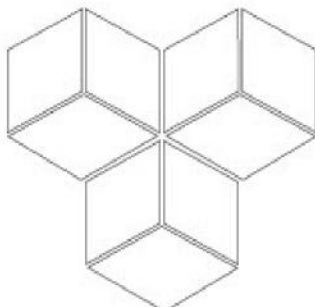
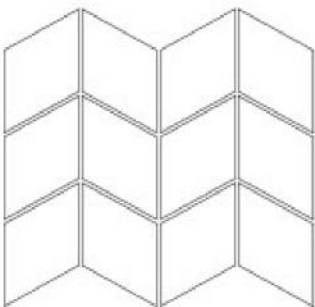
ES 51(B)



ES 05(A)



ES 06 (A)





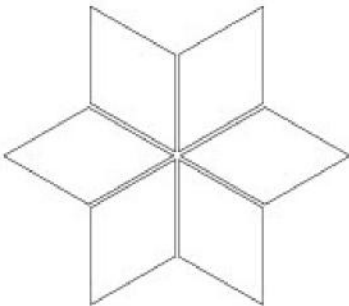
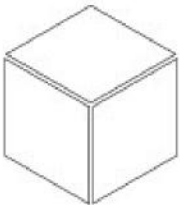
ES 42 A
Size: 149mmx85mm

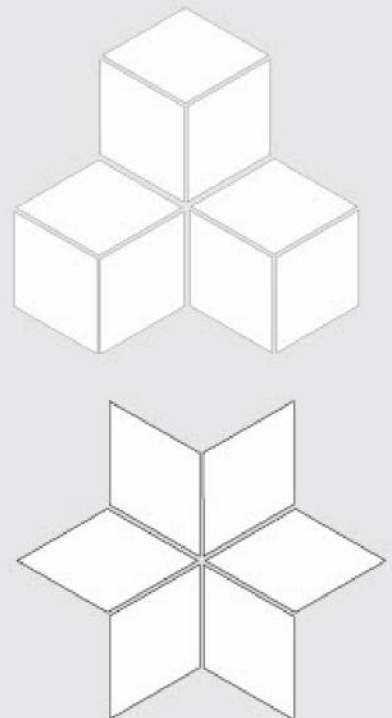


ES 51
Size: 149mmx85mm



ES 104 A
Size: 149mmx85mm







ES 54 A
Size: 50mmx50mm



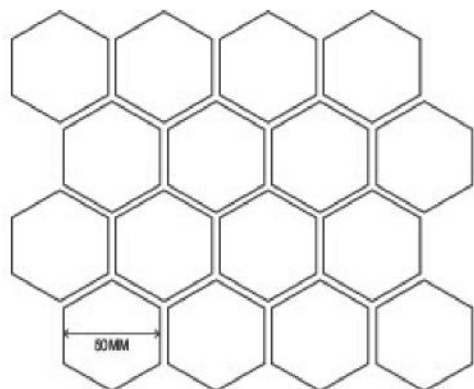
ES 06 (A)
Size: 50mmx50mm



ES 05 A
Size: 50mmx50mm

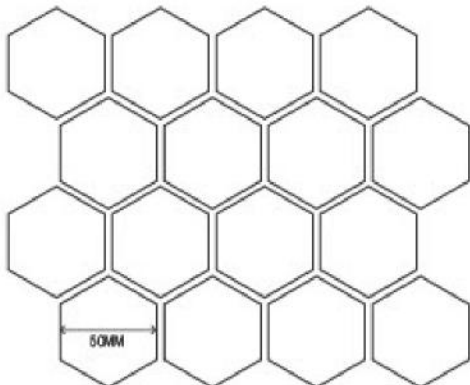


ES 04 A
Size: 50mmx50mm



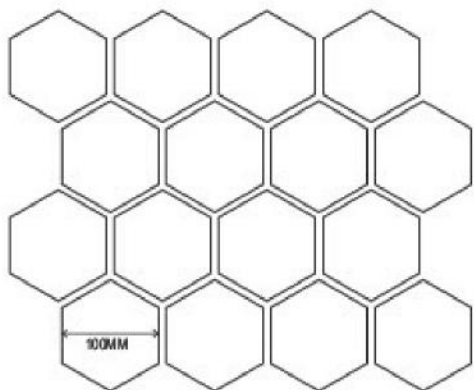
Available in 50mm and 100mm



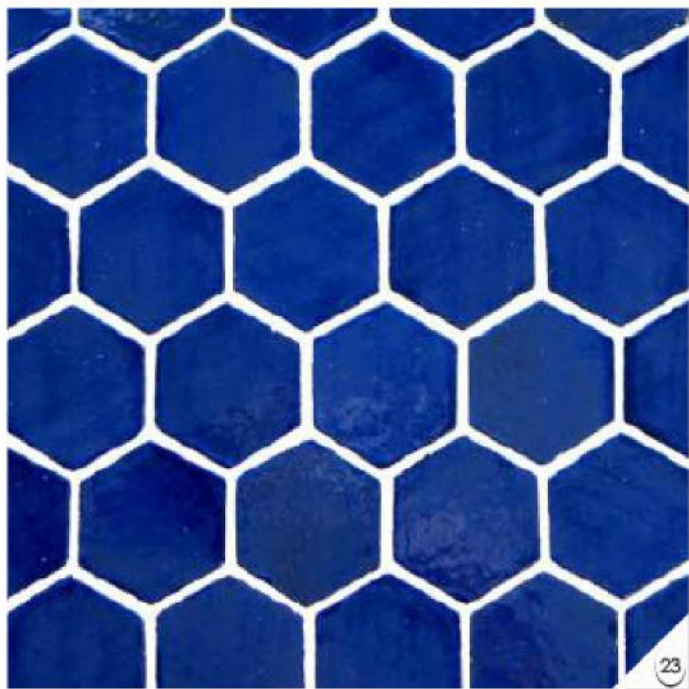


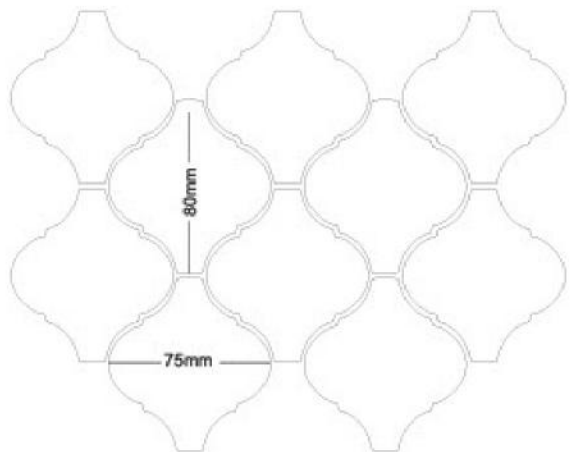
Available in 50mm and 100mm

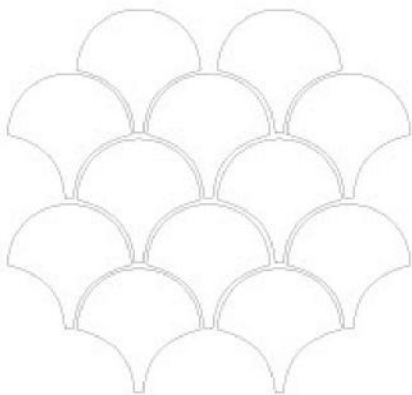




Available in 50mm and 100mm





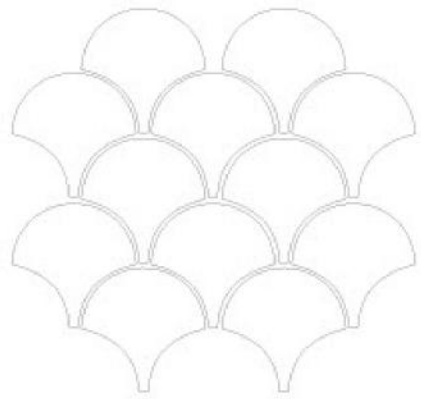


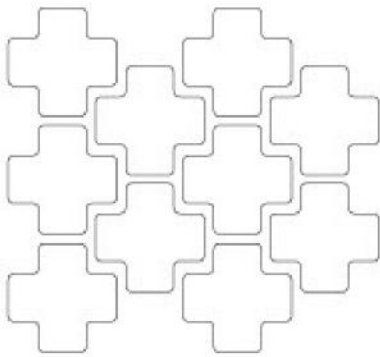


ES 56 Size: 100mmx100mm
ES 32 B Size: 100mmx100mm
ES 22 A Size: 100mmx100mm

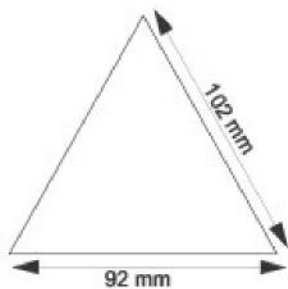
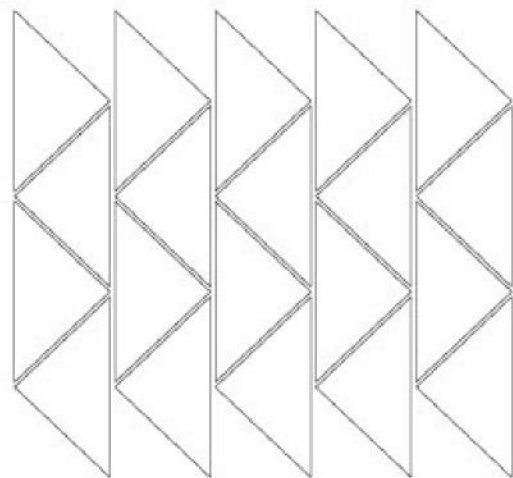


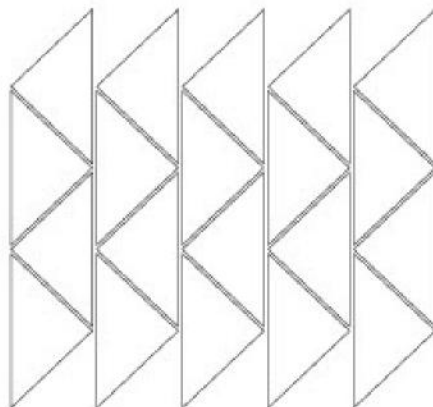
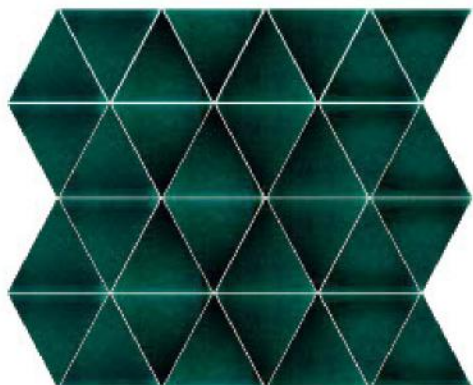
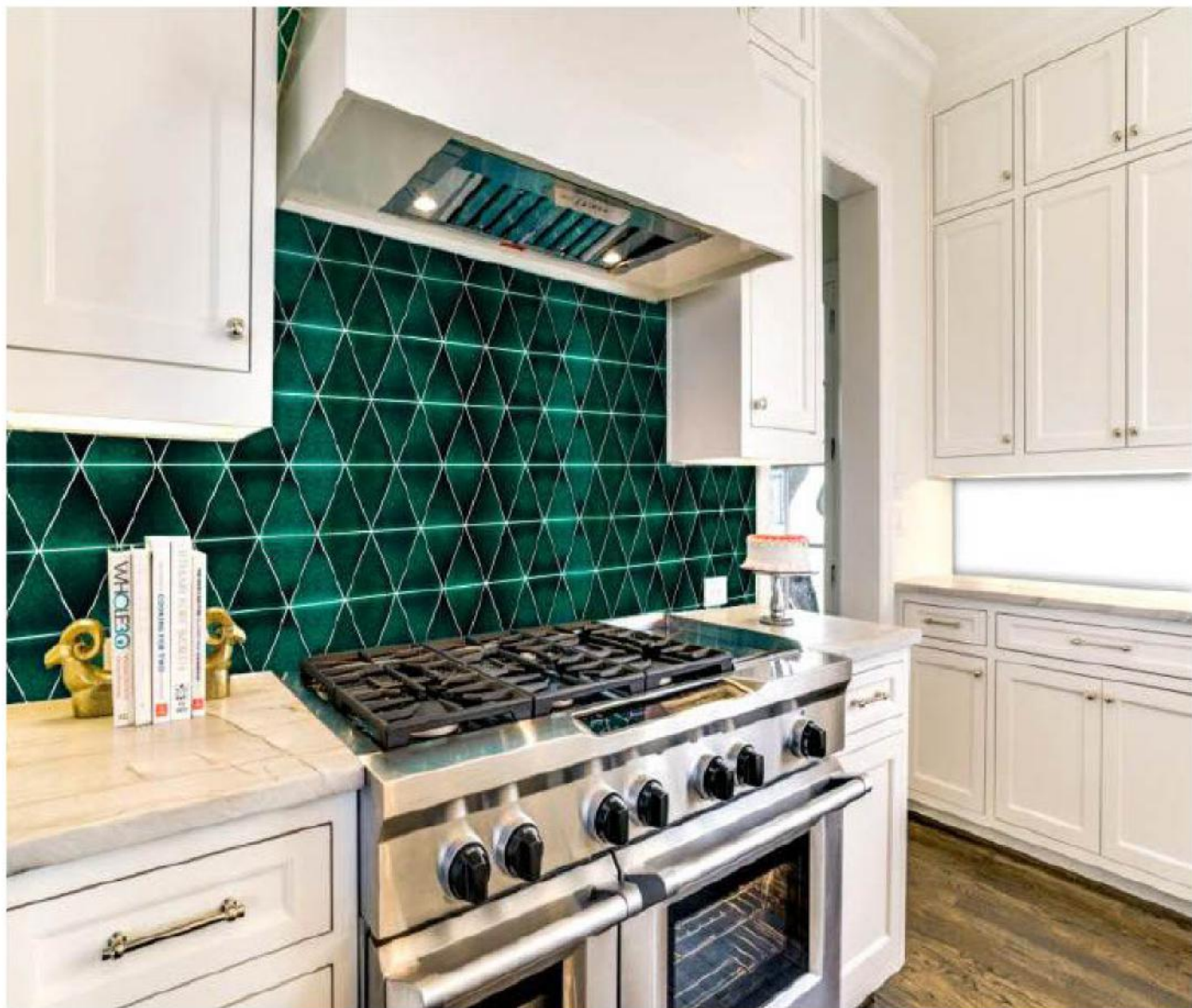
ES 15 Size: 100mmx100mm
ES 33 A Size: 100mmx100mm

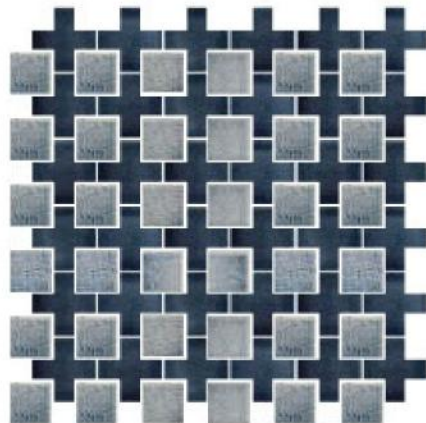




TRIANGLE
102mmx92mm

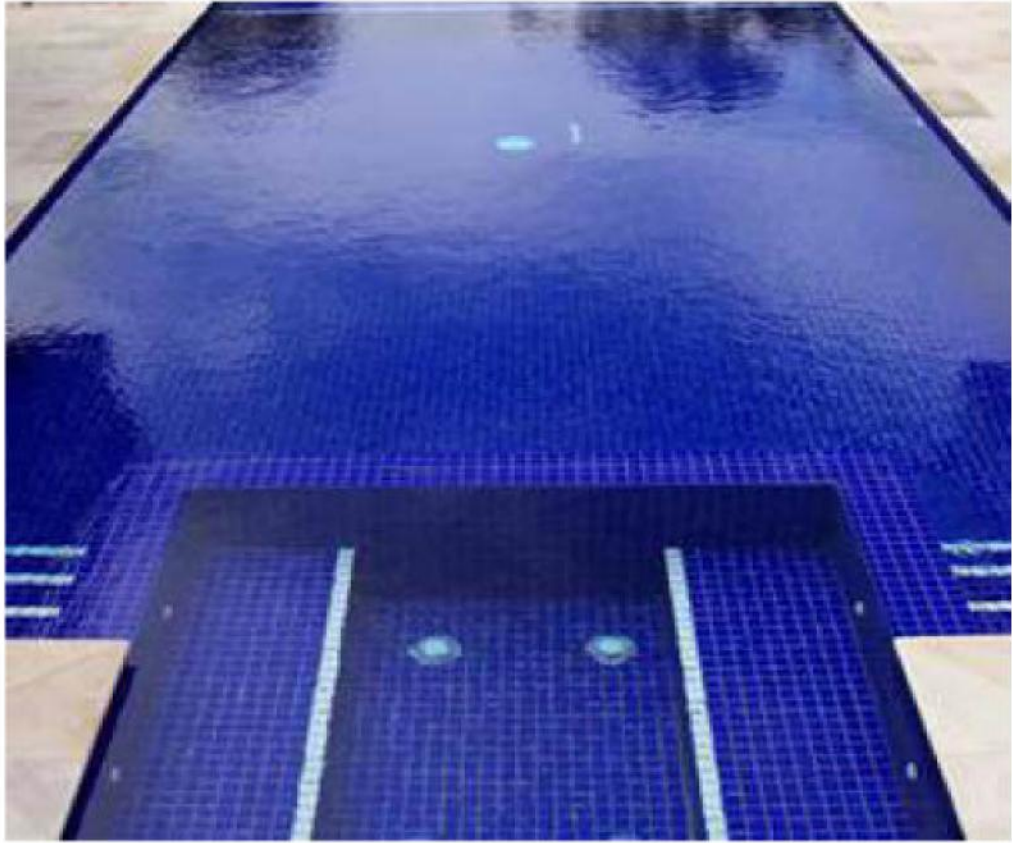




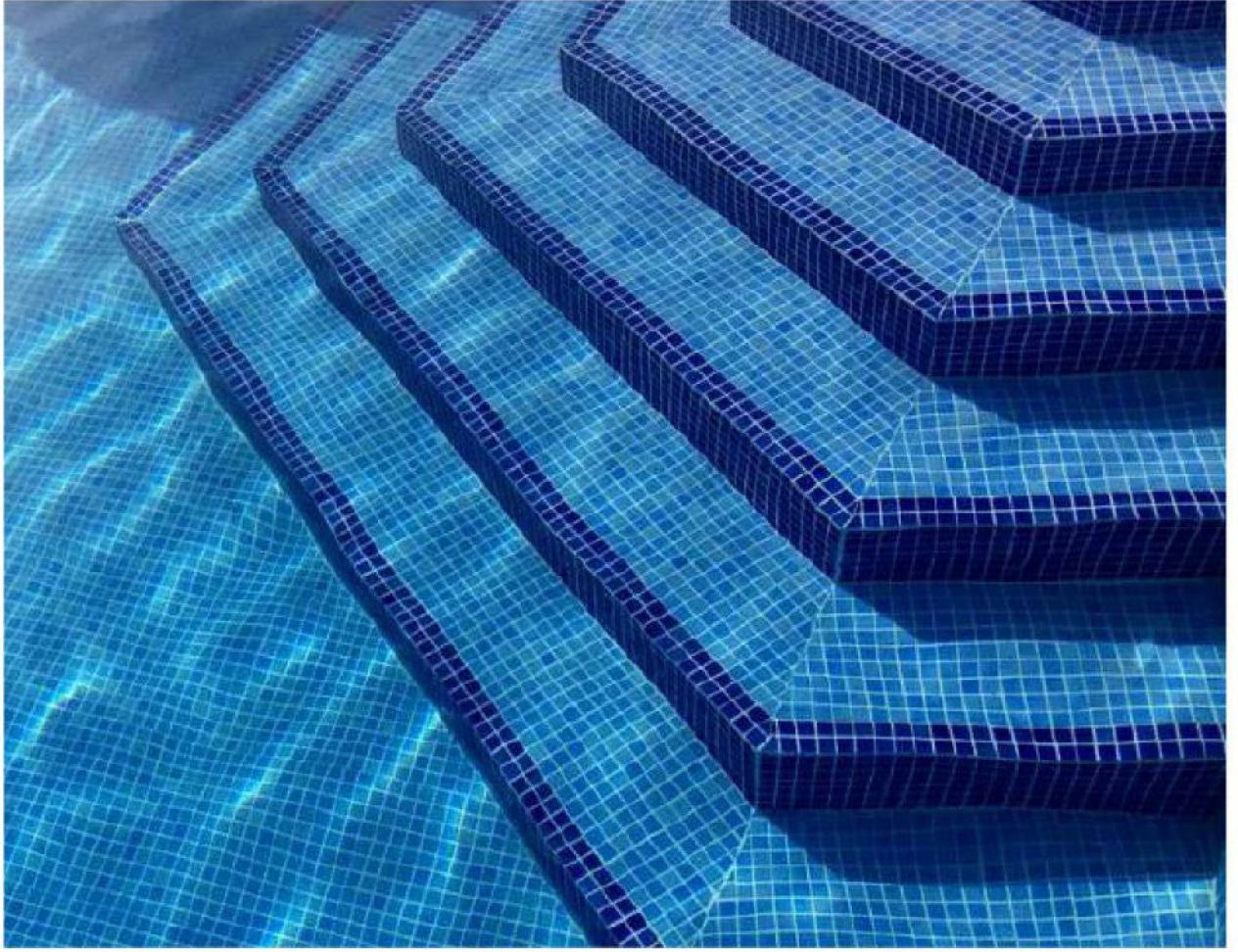






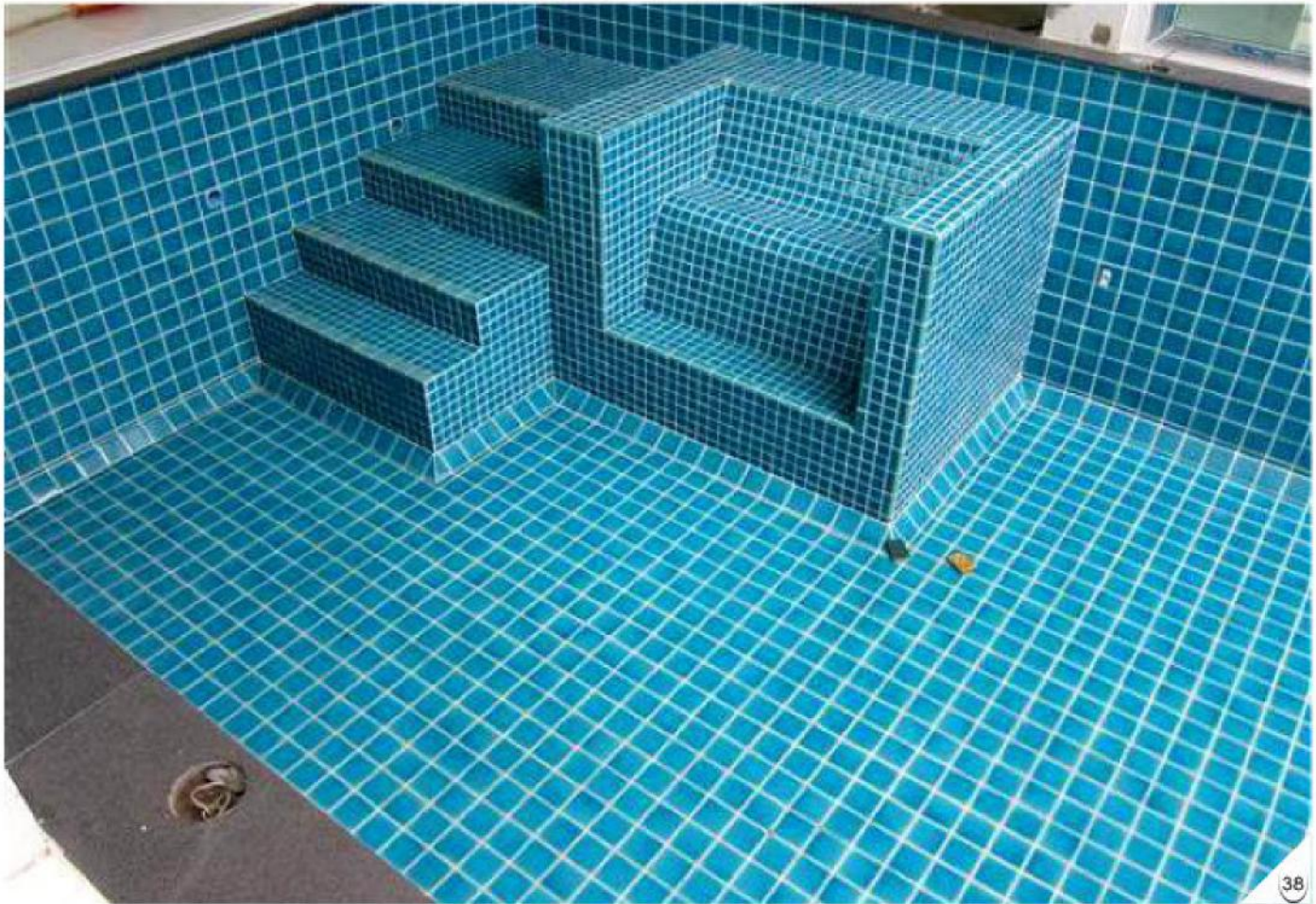




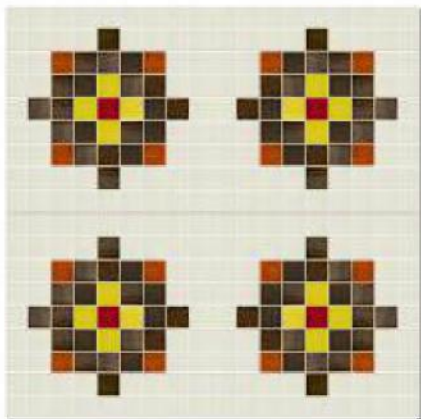




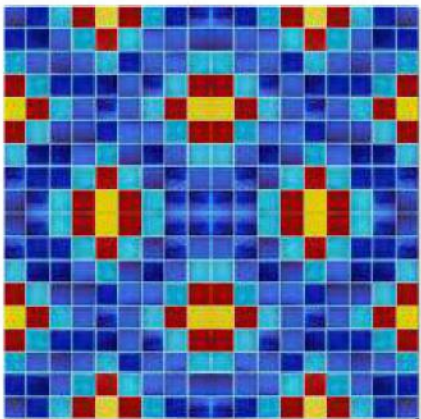




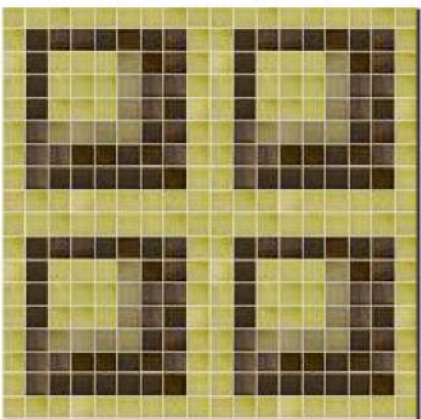




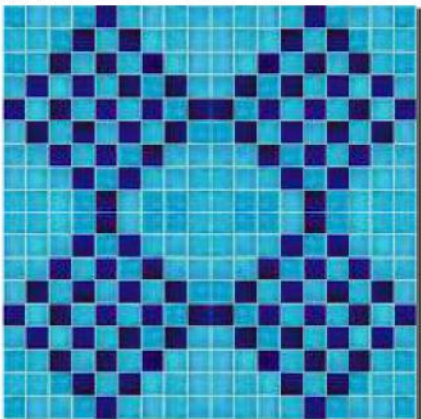
HP 01



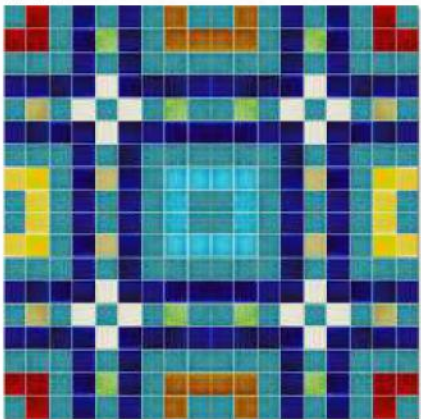
HP 02



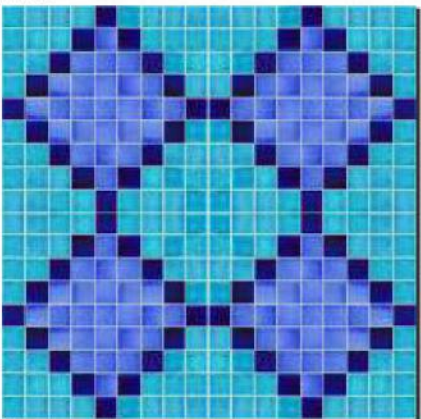
HP 02



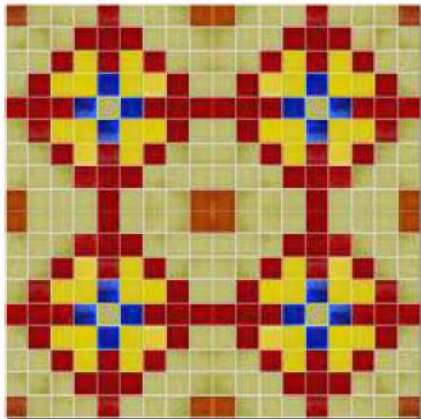
HP 04



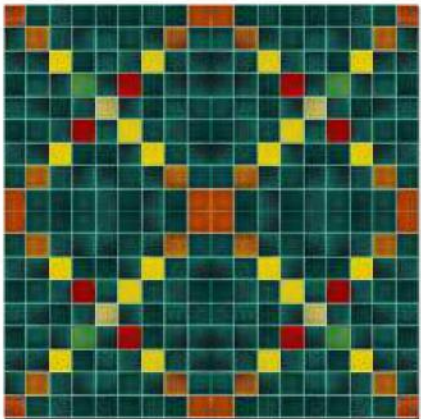
HP 05



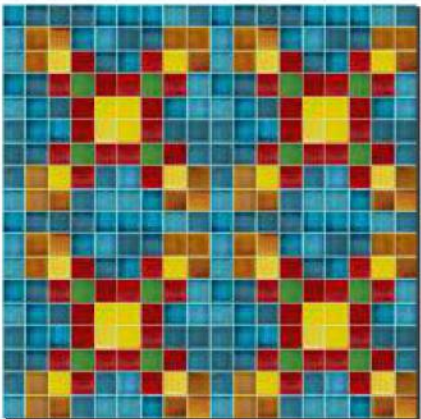
HP 06



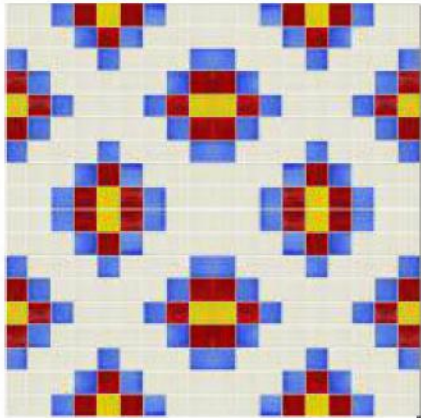
HP 07



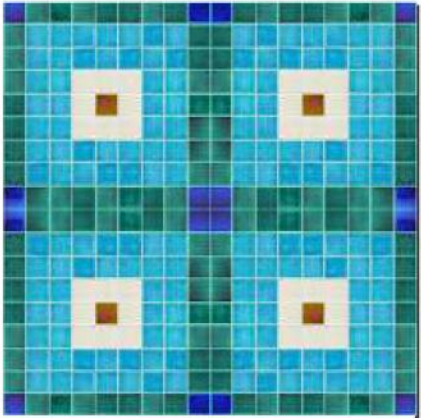
HP 08



HP 09



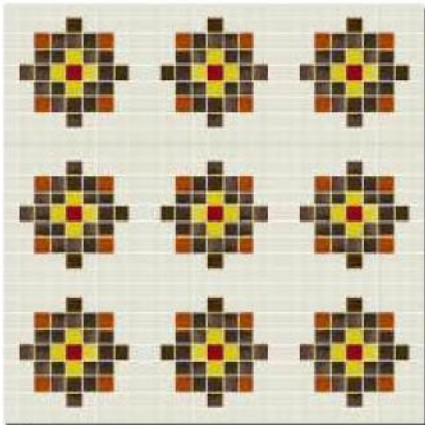
HP 10



HP 11



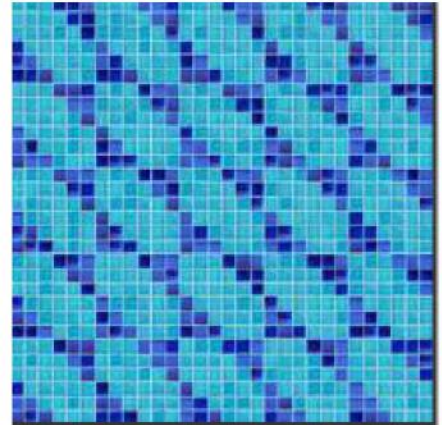
HP 12



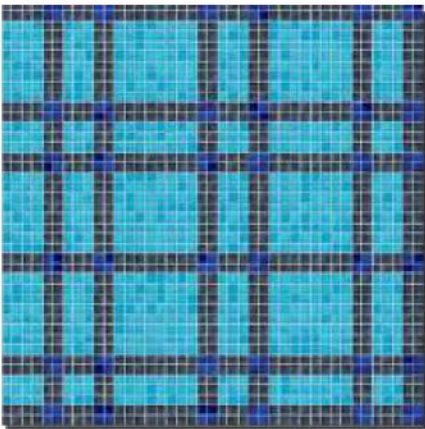
HP 13



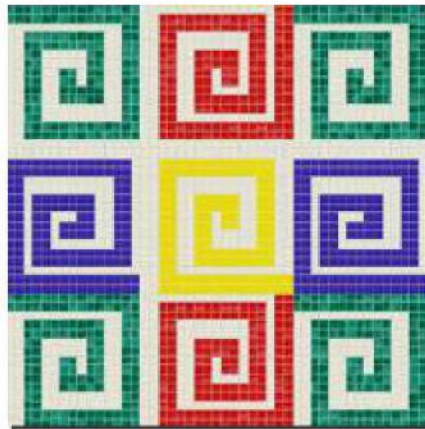
HP 14



HP 15



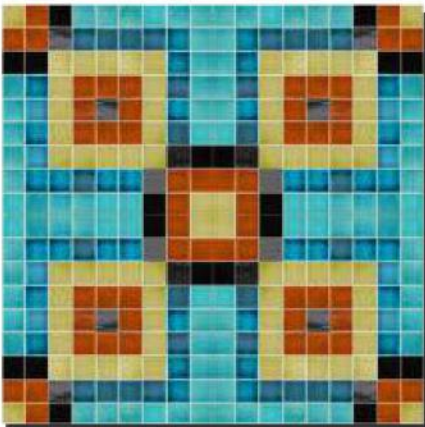
HP 16



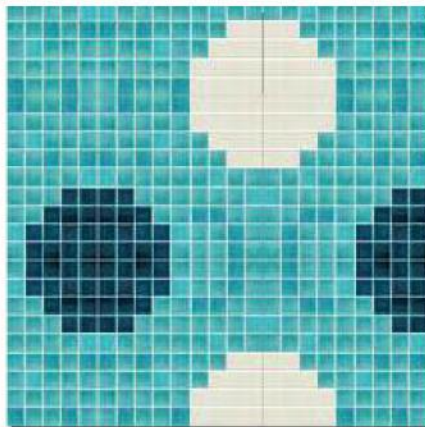
HP 17



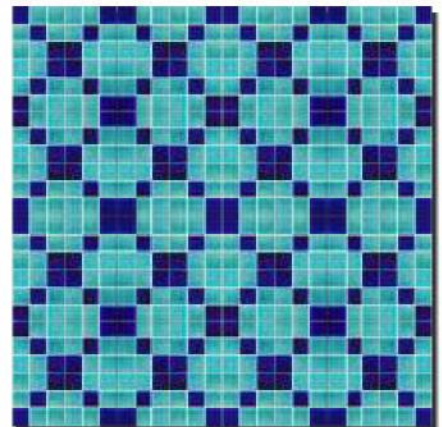
HP 18



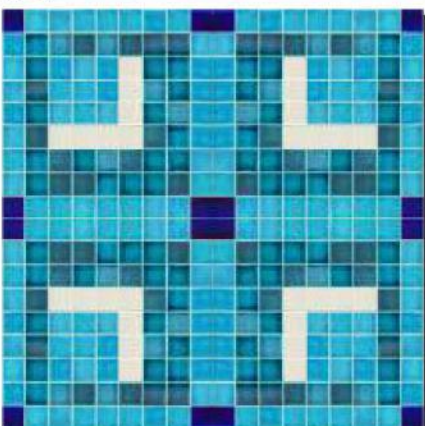
HP 19



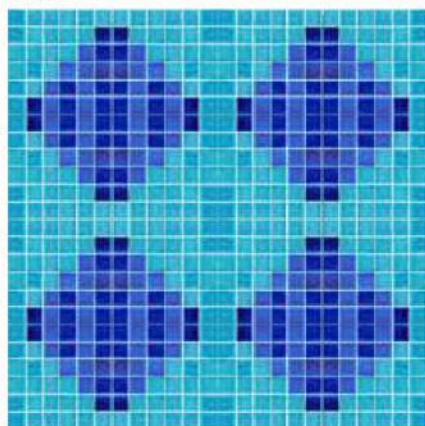
HP 20



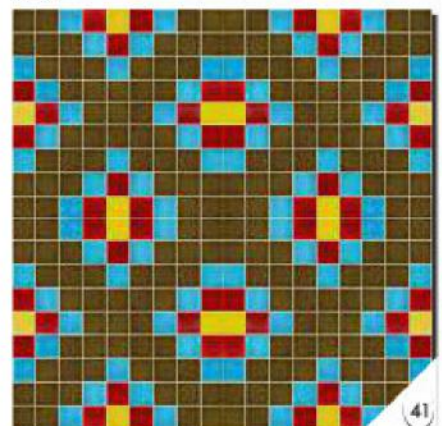
HP 21



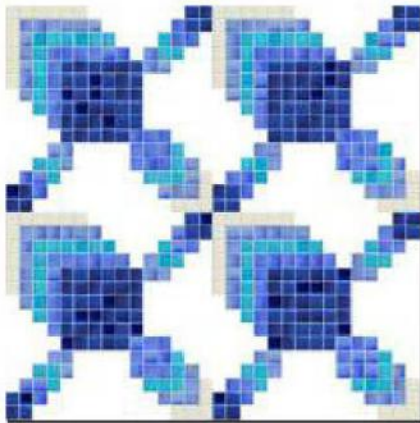
HP 22



HP 23



HP 24



HP 25



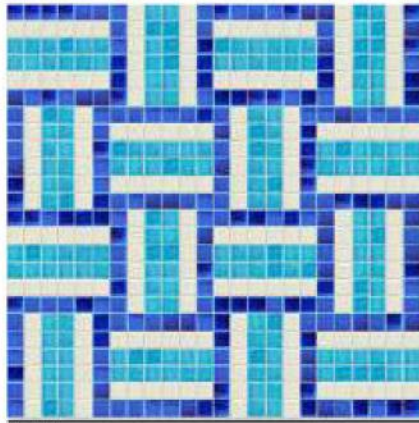
HP 26



HP 27



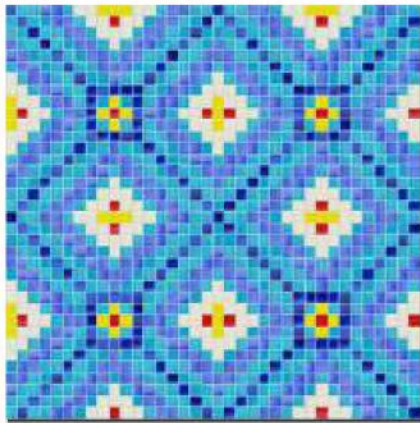
HP 28



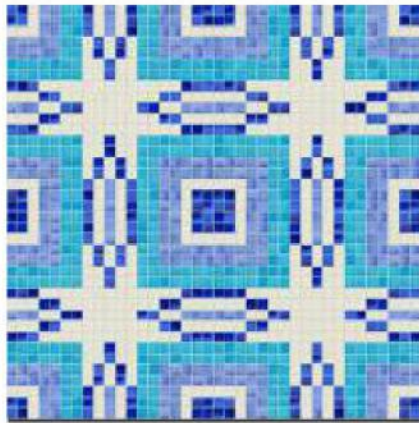
HP 29



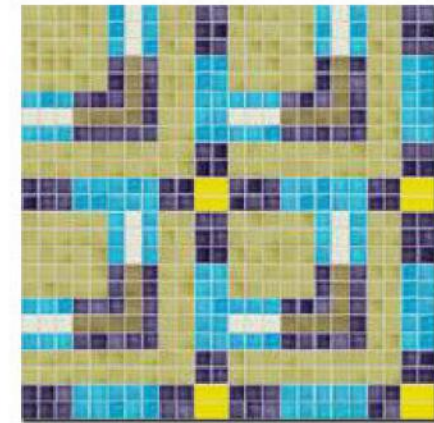
HP 30



HP 31



HP 32



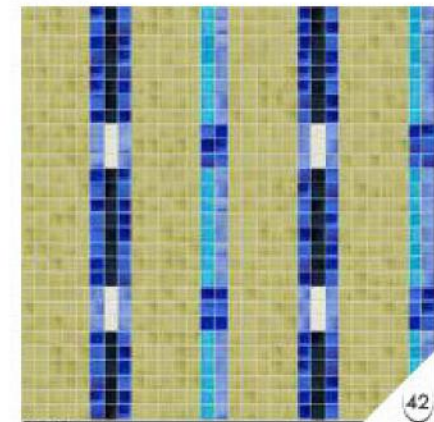
HP 33



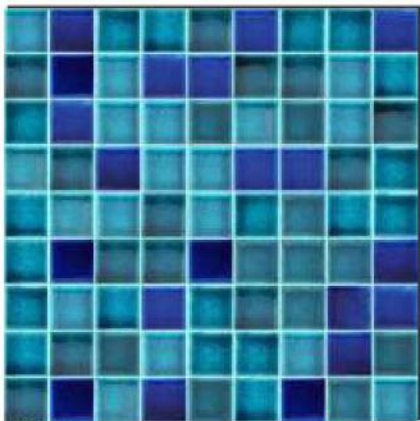
HP 34



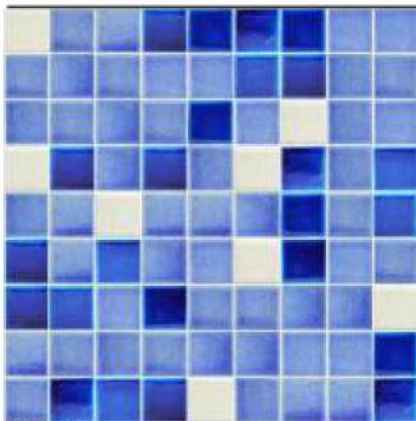
HP 35



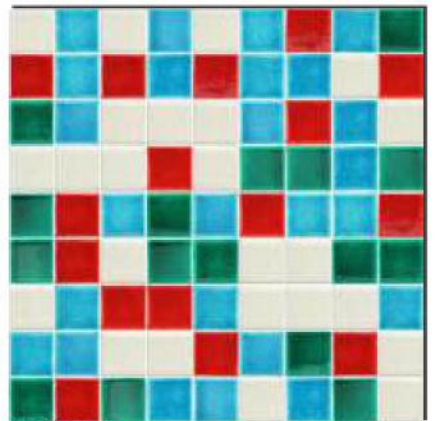
HP 36



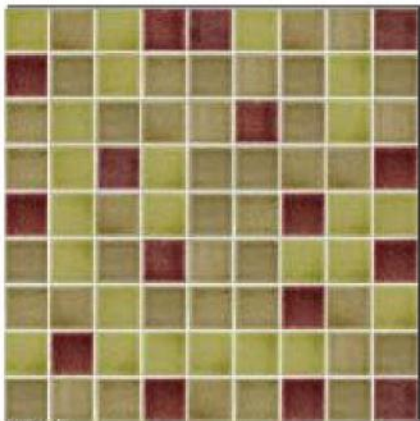
HB 01



HB 08



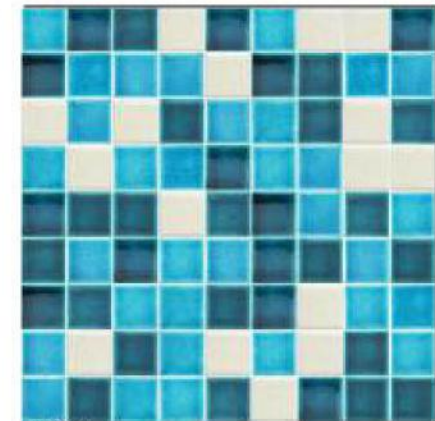
HB 22



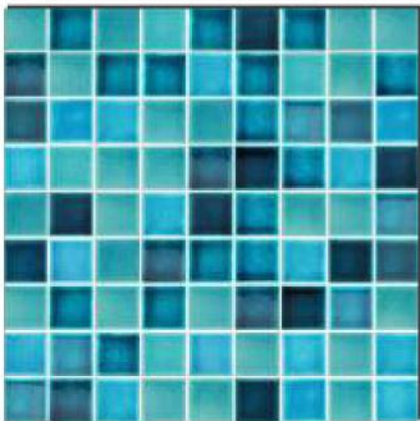
HB 13



HB 20



HB 09



HM RM 01



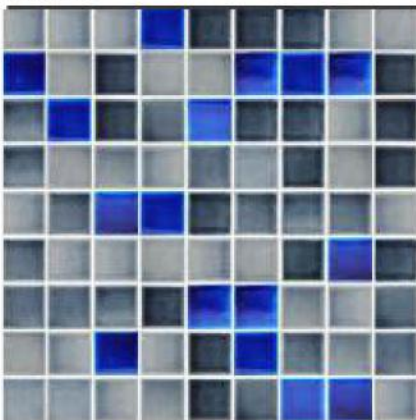
HM RM 02



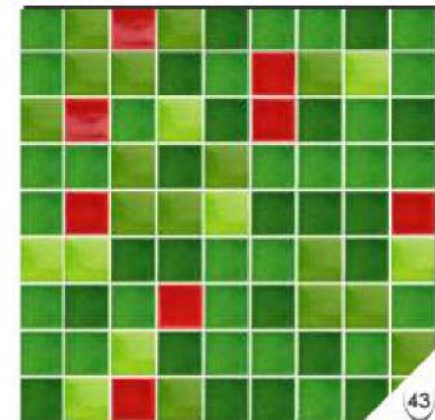
HM RM 03



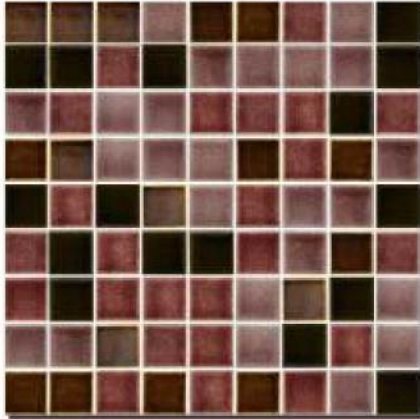
HM RM 04



HM RM 05



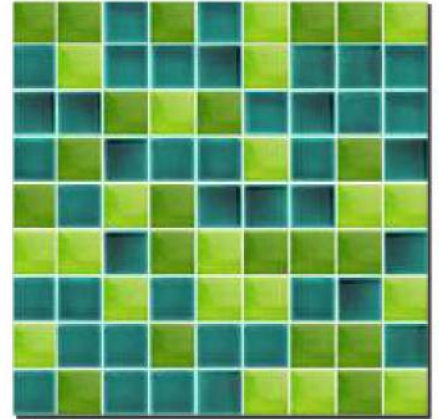
HM RM 06



HM RM 037



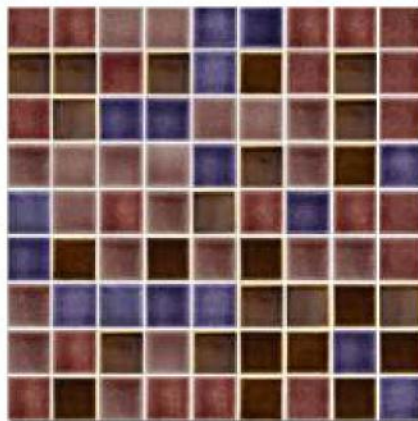
HM RM 08



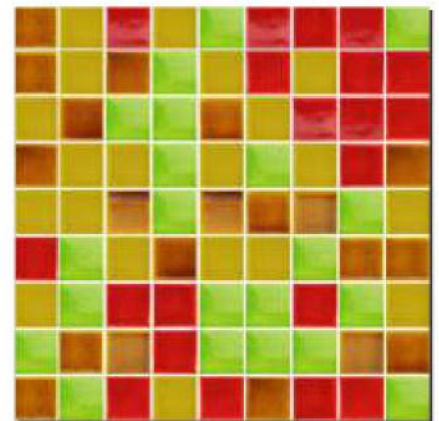
HM RM 09



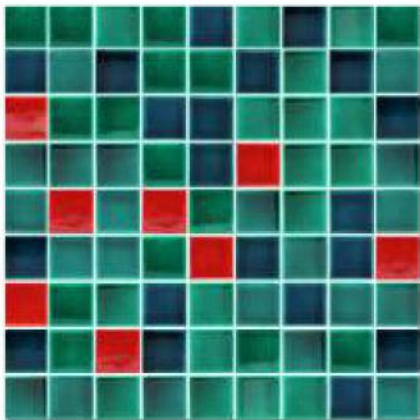
HM RM 10



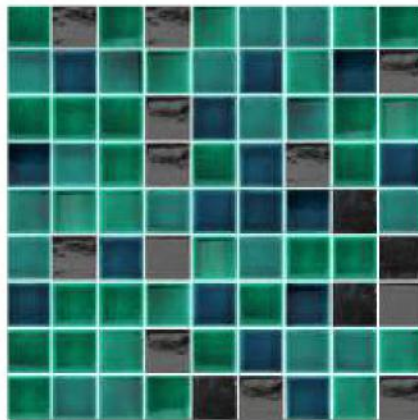
HM RM 11



HM RM 12



HM RM 13

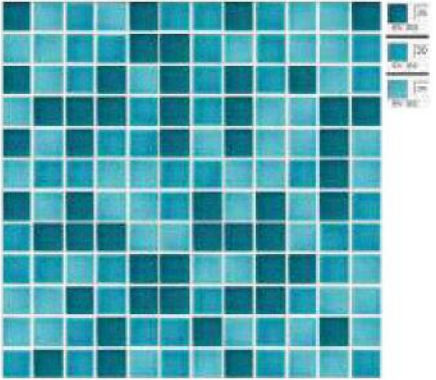


HM RM 14

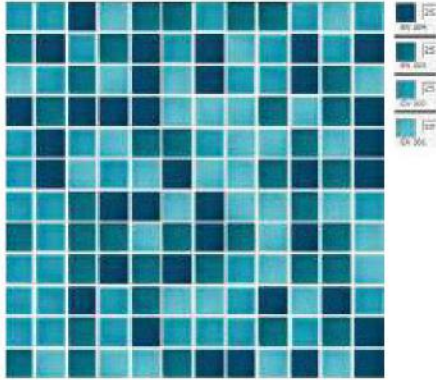


HM RM 15

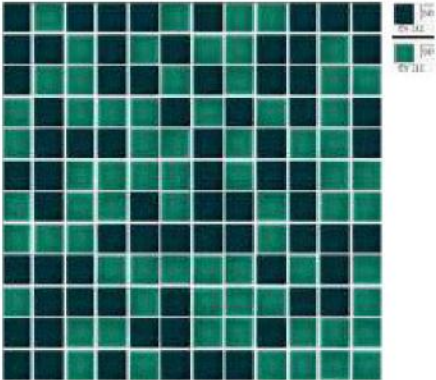




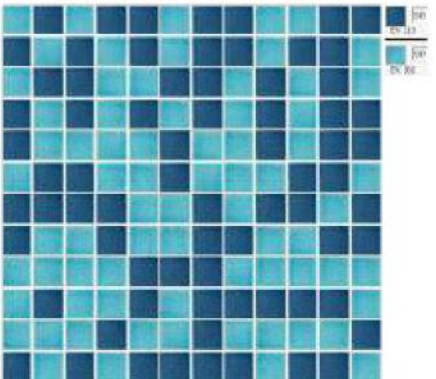
EP 48-M 110



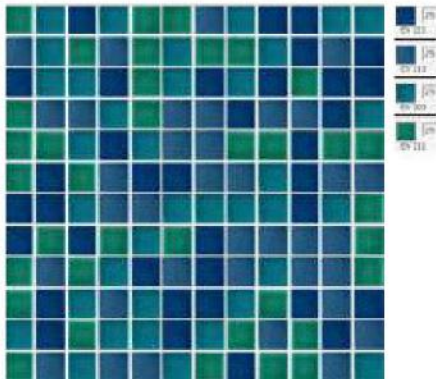
EP 48-M 111



EP 48-M 112



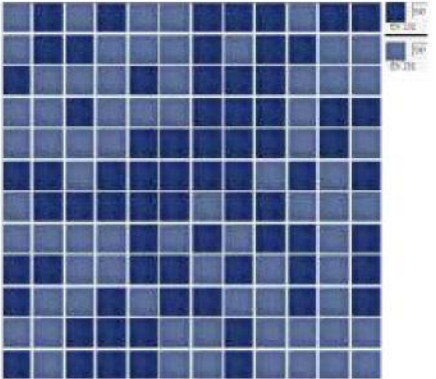
EP 48-M 113



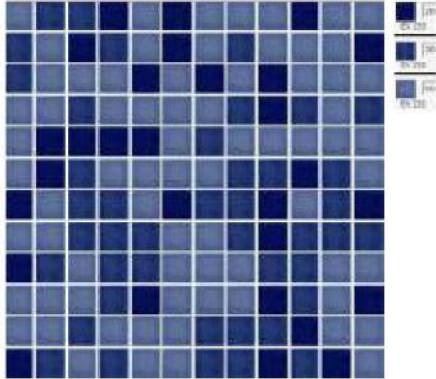
EP 48-M 114



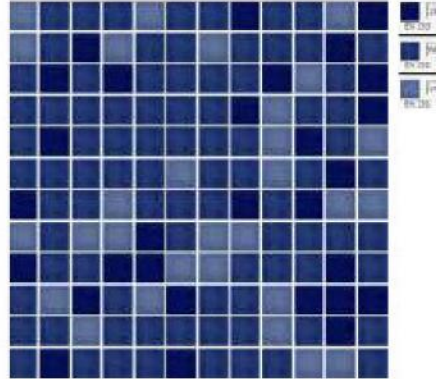
EP 48-M 117



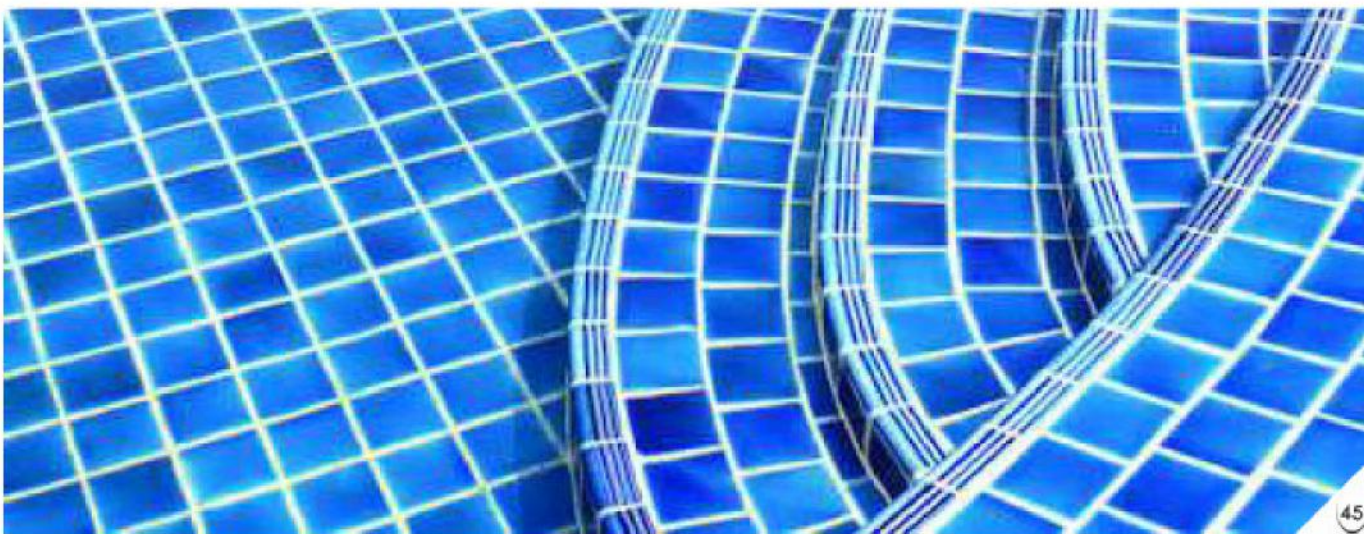
EP 48-M 116



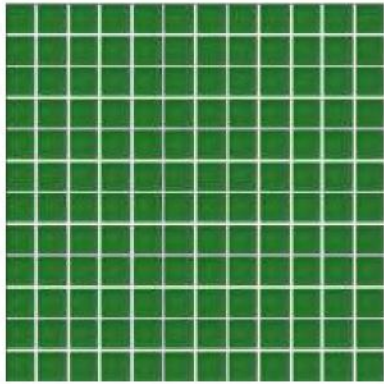
EP 48-M 115



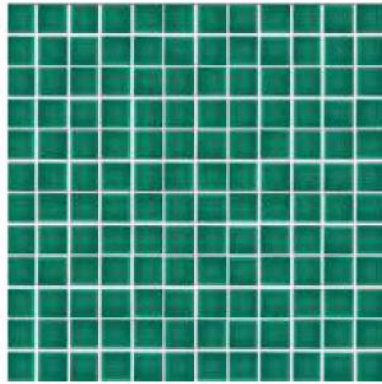
EP 48-M 118



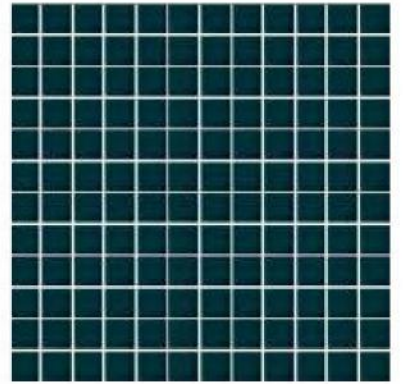
Colour variation & size variation is in herit properties of Handmade Tiles.



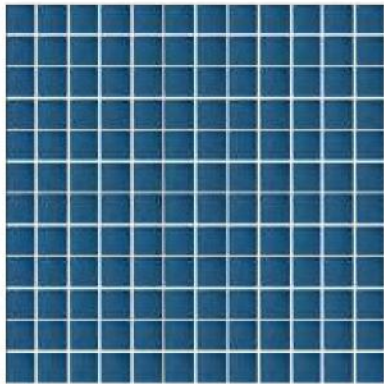
EV-252



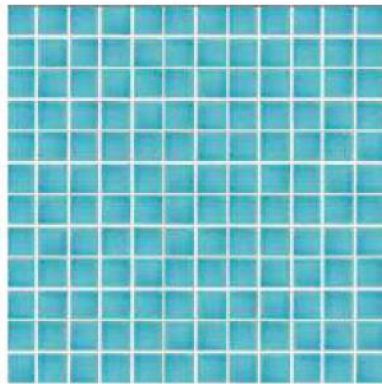
EV-211



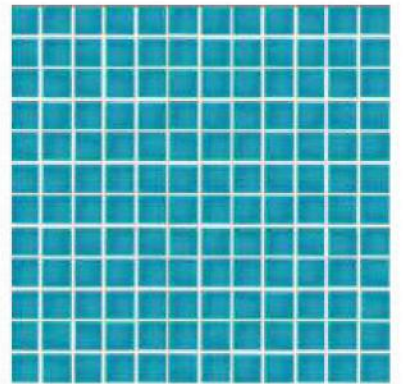
EV-212



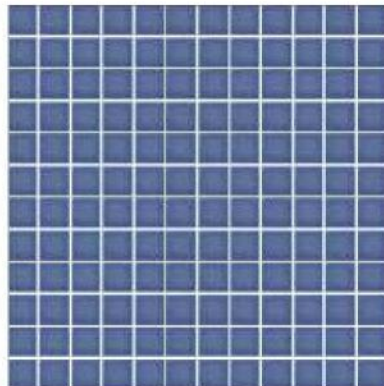
EV-213



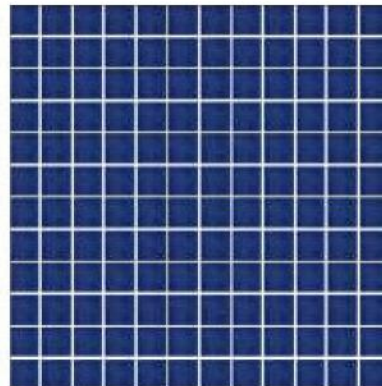
EV-201



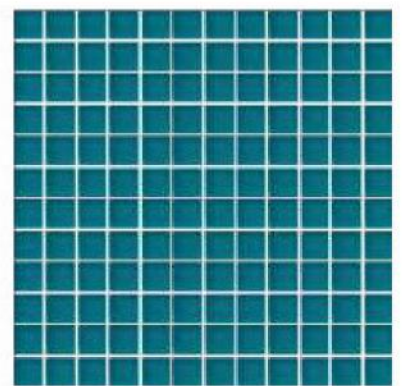
EV-202



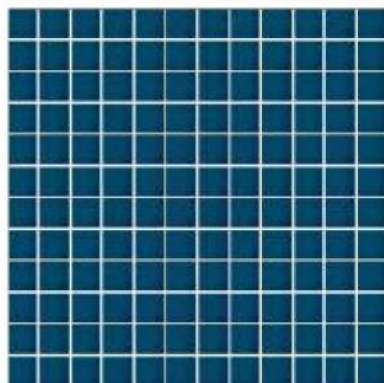
EV-231



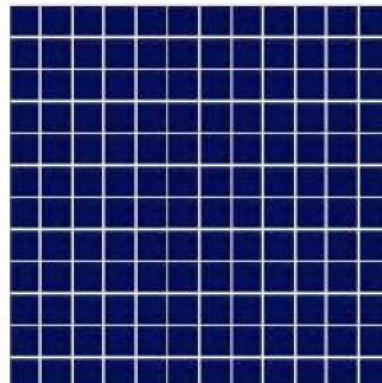
EV-232



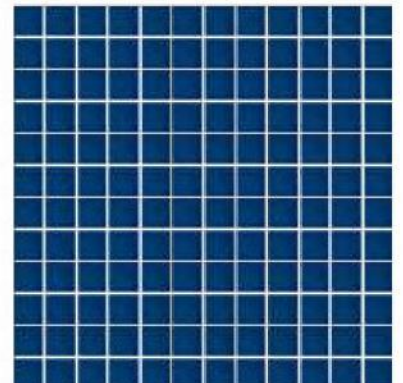
EV-203



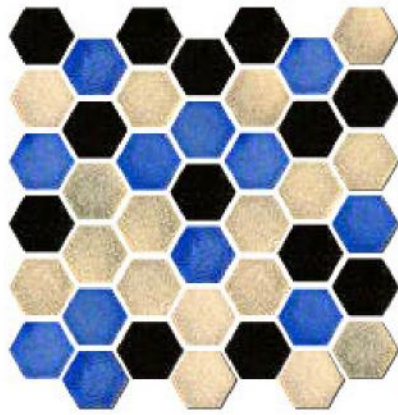
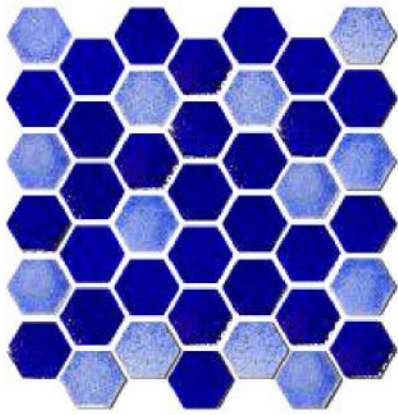
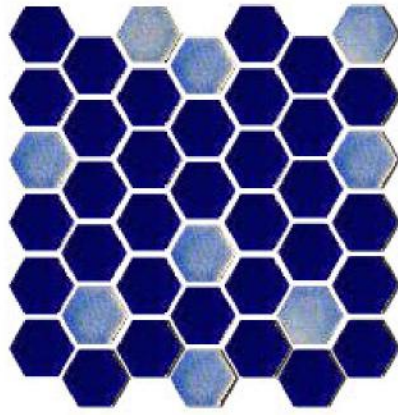
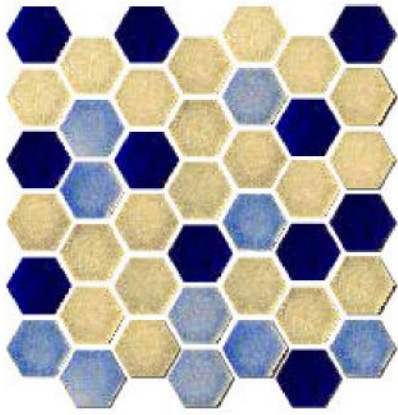
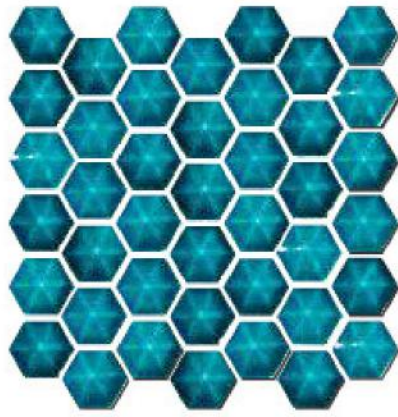
EV-204



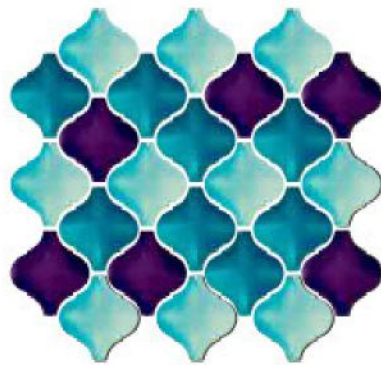
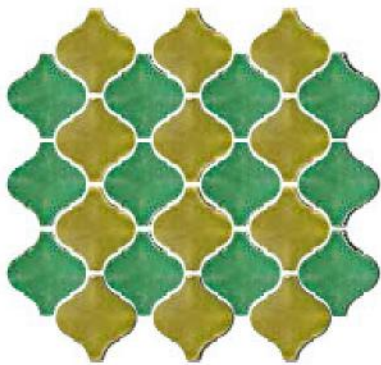
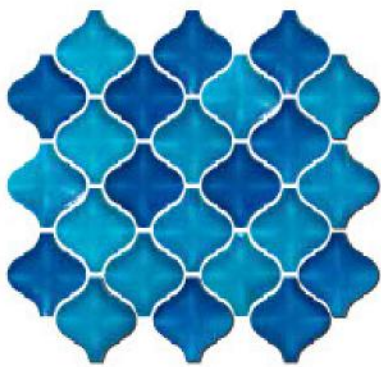
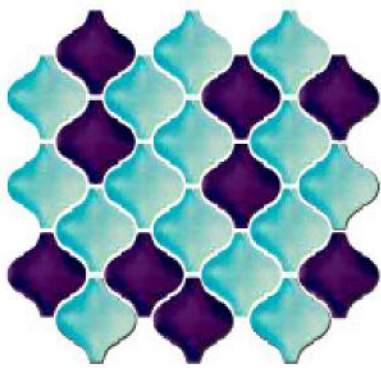
EV-233



EV-221









Borders





HG 10



HG 09



HG 08



HG 06



HG 02



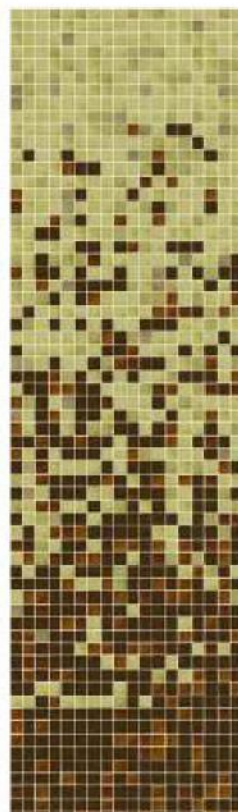
HG 01



HG 03



HG 04



HG 05



HG 07

PORCELAIN

Size Mosaic	48mm x 48mm	73mm x 73mm
Mosaic Thickness	6mm (Approx)	6mm (Approx)
Sheet Dimension	305mmx305mm	307mmx307mm
Joint Gap	3mm (Approx)	5mm (Approx)
Pieces / sheet	36pcs	16pcs
Material	Glazed Vitrified Body	
Water absorption	Not more than 0.5%	
Durability	Vitrified ceramic materials are unaffected by ageing weathering, ultra violet radiation or atmospheric pollution	

TECHNICAL CHARACTERISTICS



RESISTANT TO CHEMICAL ATTACK



COLOURS RESISTANT TO FADING



WATER ABSORPTION



FROST RESISTANT



RESISTANT TO THERMAL SHOCKS



MODULUS OF RUPTURE



BREAKING STRENGTH



RESISTANCE TO GLAZE ABRASION



RESISTANCE TO GLAZE CRACKING



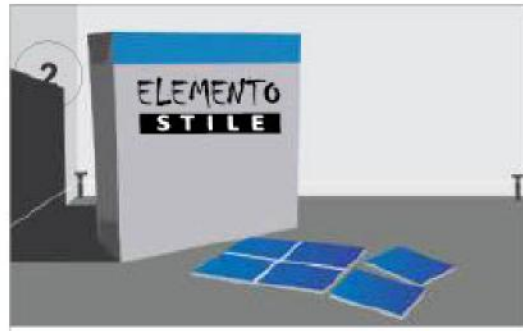
RESISTANCE TO STAIN

Color and tonal variation is a basic characteristic of kiln fire products.



1

1. Measure the area to be covered with the tiles. Fix the starting point by drawing a line for filling vertically and horizontally. Adjust the level for the floor or the wall as required and clean the tiling area to remove the dirt.



2

2. Unbox at least 3-5 boxes of tiles and mix them before start tiling.



High Glossy



No Warpage



High Breaking Strength



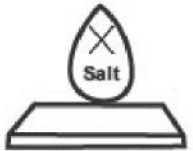
3

3. Mix the Cement Mortar/ Adhesive and apply using the flat side of trowel.



4

4. Apply the Cement Mortar/ Adhesive and use the notched side of the trowel to scrape the glazed Cement Mortar/ Adhesive on the filling area with approximately 4 mm thickness.



Swimming Pool Salt Proof



Green Environment



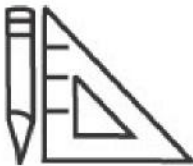
5

5. Place the tile as per the pattern, beginning at the starting corner. Place the tile mixed by the shading and tap lightly with rubber hammer or trowel. Organize or adjust the position of the tile orderly.



6

6. Before grouting, allow the tiling to dry for about 24 hours. Apply Cement Grout / Epoxy Grout using rubber trowel. Again use the trowel or sponge to remove the excess grout from the tiles. After that clean the lines between the tiles. let it dry for a while and clean the surface.



Design Service



THE STONE PEOPLE

D - 200, Marble Market,
Mansarovar Garden,
New Delhi - 110015.
INDIA.

+91 11 2511 1111 | +91 98739 39391
stonepeopleindia@gmail.com

www.thestonepeople.in